

Jacob Lawrence

The Migration Series

Critical and Historical Study:

Jacob Lawrence's Migration Series serves as a visual documentation of the journey made by millions of African Americans after World War I, when slavery was abolished. They were traveling from the south to the north for a better life with job and educational opportunities. Due to both World War I and later World War II, food was scarce and expensive. There were many dangers along the way, and even when they arrived in the north, they still faced discrimination and segregation. Using tempera paint on wood panel, Lawrence created 60 images that show the challenges of their journey. He mixed his own pigments and applied each color one at a time to all of the panels so the colors would be consistent, creating unity throughout the entire series.



Vocabulary:

Composition – the placement of visual elements in a work of art

Tempera Paint – a combination of pigment and binder that produces a fast-drying paint

Human Rights – a standard of legal and moral justice for all people



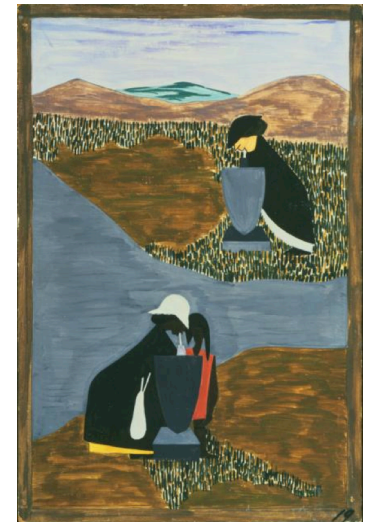
The Migration Series, Panel no. 1, 1940-41



The Migration Series, Panel no. 3, 1940-41



Panel 11, Food had doubled in price because of the war, 1940-41



Panel 19, There had always been discrimination, 1940-41